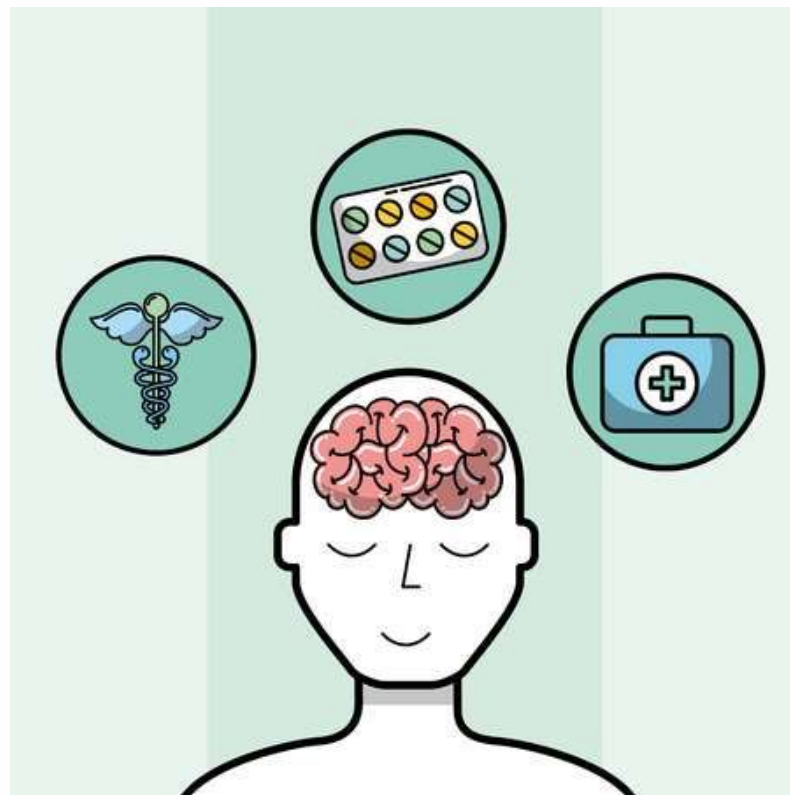


Desert Pain and Rehab Specialists

BEHAVIORAL HEALTH SERVICES



Phoenix:
602-944-2222
Tucson:
520-393-8060
Globe:
928-425-8273

All Pain Clients Receiving Opiates will be Required to Participate in an Initial Evaluation and all Designated Follow Up Appointments

Frequently Asked Questions (FAQ)

1. Why must I participate?
 - a. Chronic Pain Clients Experience Depression and Suicide at Far Greater Rates
2. How often will I need to see the Mental Health Team?
 - a. Minimum follow-up will be determined by Medication Dosage. The higher the dosage, the more pain experience and therefore the greater risk.
 - b. Emergency Follow-Up may be initiated by any Provider.
3. Can I be seen more often?
 - a. Yes, in addition to evaluating risks associated with pain, the Mental Health Program is prepared to offer Therapy, Case Management, and Psychiatric Services for the Client. Unlike, the traditional Mental Health Clinic, Desert Pain and Rehab is committed to retaining staff to minimize provider turnover.
4. I already have a Psychiatric Provider. Can I move to Desert Pain and Rehab?
 - a. Yes, Desert Pain and Rehab is fully committed to offer Mental Health Services on the same day as your Pain Appointment to improve convenience to our clients.
 - b. Clients may continue with their current Mental Health Providers for their current care but all Pain Management Risk Assessments must be done by Desert Pain and Rehab.
5. Do patients need to receive Pain Management to be seen for Mental Health Services?
 - a. No, The Mental Health Program is available to all Pain Management Clients, Family Members, and Referrals with the goal of offering an appointment within 7 days for a Psychiatric Evaluation. This is compared to the average 4-5 month wait in Arizona.

Mental Health Services

- * Mental Health Evaluation
- * Medication Management
 - * Individual & Group Therapy
 - * Case Management

Adult and Child Conditions

- * Depression
- * Mood Disorders
- * Substance Abuse
 - * Anxiety
 - * ADHD
 - * Psychosis